

## Aseptic fittings for Orbital welding DIN 11865

Art.No

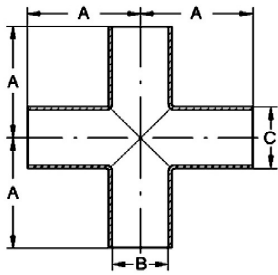
EUR

Art.No

EUR

### Cross piece ISO, H3

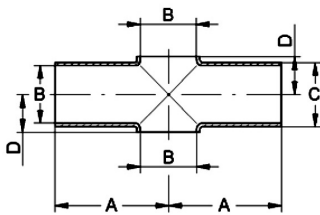
DN	A	B	C					AISI316L-1.4435
80	130	84,3	88,9					489238 Enquiry
100	160	109,7	114,3					489239 Enquiry



Similar to DIN 11865

### Cross piece DIN, short, H3

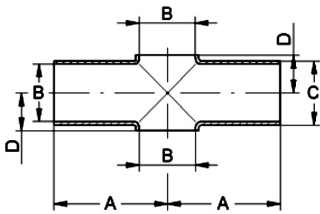
DN	A	B	C	D				AISI316L-1.4435
10	35	10	13	-				489330 Enquiry
15	35	16	19	11				489331 Enquiry
20	40	20	23	13				489332 Enquiry
25	50	26	29	16				489333 Enquiry
32	55	32	35	19,5				489334 Enquiry
40	60	38	41	23				489335 Enquiry
50	80	50	53	30				489336 Enquiry
65	105	66	70	40				489337 Enquiry
80	130	81	85	47,5				489338 Enquiry
100	155	100	104	58				489339 Enquiry



Similar to DIN 11865

### Cross piece ASME, short, H3

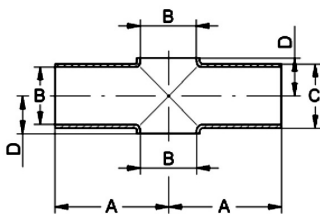
DN	A	B	C	D				AISI316L-1.4435
1/2"	47,5	9,4	12,7	-				489401 Enquiry
3/4"	51	15,75	19,05	11				489402 Enquiry
1"	54	22,1	25,4	14				489403 Enquiry
1,5"	60,3	34,8	38,1	21				489404 Enquiry
2"	73	47,5	50,8	29				489405 Enquiry
2,5"	80	60,2	63,5	35				489406 Enquiry
3"	85	72,9	76,2	43				489407 Enquiry
4"	105	97,38	101,6	57				489408 Enquiry



Similar to DIN 11865

### Cross piece ISO, short, H3

DN	A	B	C	D				AISI316L-1.4435
8	32	10,3	13,5	-				489529 Enquiry
10	34	14	17,2	10				489530 Enquiry
15	36	18,1	21,3	12				489531 Enquiry
20	55	23,7	26,9	15				489532 Enquiry
25	60	29,7	33,7	18,5				489533 Enquiry
32	65	38,4	42,4	23				489534 Enquiry
40	65	44,3	48,3	27				489535 Enquiry
50	90	56,3	60,3	34				489536 Enquiry
65	110	72,1	76,1	43				489537 Enquiry



Similar to DIN 11865

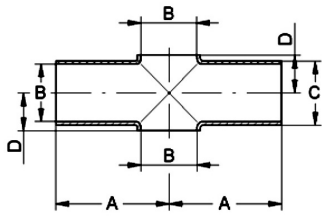
**LINNEMANN**  
Rohrverbindungen • Edelstahlarmaturen  
Pipe connections • Stainless steel fittings

LINNEMANN GmbH • Heerweg 14-16  
72070 Tübingen / Germany

Fon: +49 (0) 7071 97555-0  
Fax: +49 (0) 7071 97555-10

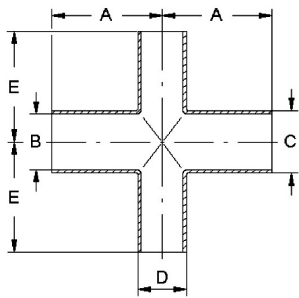
E-Mail: info@linnemann-online.com  
Internet: www.linnemann-online.com

Aseptic fittings for Orbital welding DIN 11865						Art.No	EUR	Art.No	EUR
Cross piece ISO, short, H3	DN	A	B	C	D			AISI316L-1.4435	
	80	130	84,3	88,9	49,5			489538	Enquiry
	100	160	109,7	114,3	63			489539	Enquiry



Similar to DIN 11865

Reducing cross piece DIN, H3	DN	A	B	C	D	E			AISI316L-1.4435
	15-10	35	16	19	13x1,5	35			489659
20-10	40	20	23	13x1,5	40			489660	Enquiry
20-15	40	20	23	19x1,5	40			489661	Enquiry
25-10	50	26	29	13x1,5	50			489662	Enquiry
25-15	50	26	29	19x1,5	50			489663	Enquiry
25-20	50	26	29	23x1,5	50			489664	Enquiry
32-15	55	32	35	19x1,5	55			489665	Enquiry
32-20	55	32	35	23x1,5	55			489666	Enquiry
32-25	55	32	35	29x1,5	55			489667	Enquiry
40-15	60	38	41	19x1,5	60			489668	Enquiry
40-20	60	38	41	23x1,5	60			489669	Enquiry
40-25	60	38	41	29x1,5	60			489670	Enquiry
40-32	60	38	41	35x1,5	60			489671	Enquiry
50-15	80	50	53	19x1,5	80			489634	Enquiry
50-20	80	50	53	23x1,5	80			489635	Enquiry
50-25	80	50	53	29x1,5	80			489672	Enquiry
50-32	80	50	53	35x1,5	80			489673	Enquiry
50-40	80	50	53	41x1,5	80			489674	Enquiry
65-25	105	66	70	29x1,5	80			489675	Enquiry
65-32	105	66	70	35x1,5	80			489676	Enquiry
65-40	105	66	70	41x1,5	80			489677	Enquiry
65-50	105	66	70	53x1,5	80			489678	Enquiry
80-25	130	81	85	29x1,5	105			489679	Enquiry
80-32	130	81	85	35x1,5	105			489680	Enquiry
80-40	130	81	85	41x1,5	105			489681	Enquiry
80-50	130	81	85	53x1,5	105			489682	Enquiry
80-65	130	81	85	70x1,5	105			489683	Enquiry
100-50	155	100	104	53x1,5	130			489684	Enquiry
100-65	155	100	104	70x1,5	130			489685	Enquiry
100-80	155	100	104	85x1,5	130			489686	Enquiry



Similar to DIN 11865